

X-spl0it

V1.0a

(Please note that this is the first version, so there might be some mistakes)

What is it?

The X-spl0it is a technique I have developed to get around Microsoft region restrictions on the Xbox 360. The problem started when MS started blocking 18+ content to keep the Germans happy. As Germany has some very hardcore laws regarding violent videogames. This then spread to Marketplace videos and Xbox originals.

This is grossly unfair to us in the so-called "xbox live is not supported" countries, where we happily pay for 360 games, and the xbox live service without getting all the benefits.

I got tired of paying for a gimped service, and cannot wait anymore for MS to get their Act together to roll out official live support to our beautiful country **South Africa**

How does it work?

Microsoft checks to see what region your xbox is registered in, and then verifies it against a global IP database to see if it matches up. If it doesn't then you will be region locked.

Follow this link to see your current IP location

<http://whatismyipaddress.com/>

Now to get around that you need to have an IP that matches the country you are registered in.

You do this by creating an Anonymous VPN account and then doing a PPTP(VPN) connection to the server in the country of your choice.

You then enable internet connection sharing on your PC/Laptop and connect your xbox.

After digging around on the net I found these guys

<https://www.securenetics.com/servers.php?aid=0>

I chose them because they are the only ones that listed their server locations without you having to pay first, and they accept various methods of payment and you can use normal PPTP(makes configuration a whole lot easier but is less secure).

NB. I was getting loads of disconnections on my laptop, I don't know if this was because of my slow line, or the service's instability.

(For the non-geeks: Making a VPN connection is almost like using a normal modem to dial a server somewhere else and then using that connection.)

So I chose server no. 7 as my destination as my xbox is registered in the UK.

S7.securenetics.com

Now that I have my account and server address I can start by configuring.


STEP BY STEP CONFIG

1. Create a VPN Connection



New Connection Wizard

Network Connection Type
What do you want to do?




- ☐ **C**onnect to the Internet
Connect to the Internet so you can browse the Web and read email.
- ☒ **C**onnect to the network at my workplace
Connect to a business network (using dial-up or VPN) so you can work from home, a field office, or another location.
- ☐ **S**et up an advanced connection
Connect directly to another computer using your serial, parallel, or infrared port, or set up this computer so that other computers can connect to it.

< Back Next > Cancel

New Connection Wizard

Network Connection Type
What do you want to do?



- ☐ **C**onnect to the Internet
Connect to the Internet so you can browse the Web and read email.
- ☒ **C**onnect to the network at my workplace
Connect to a business network (using dial-up or VPN) so you can work from home, a field office, or another location.
- ☐ **S**et up an advanced connection
Connect directly to another computer using your serial, parallel, or infrared port, or set up this computer so that other computers can connect to it.

< Back Next > Cancel

New Connection Wizard

Connection Name
Specify a name for this connection to your workplace.

Type a name for this connection in the following box.

Company Name

Xbox VPN

For example, you could type the name of your workplace or the name of a server you will connect to.

< Back Next > Cancel

New Connection Wizard

Public Network
Windows can make sure the public network is connected first.

Windows can automatically dial the initial connection to the Internet or other public network, before establishing the virtual connection.

☒ Do not dial the initial connection.

☐ Automatically dial this initial connection:

< Back Next > Cancel

New Connection Wizard

VPN Server Selection
What is the name or address of the VPN server?



Type the host name or Internet Protocol (IP) address of the computer to which you are connecting.

Host name or IP address (for example, microsoft.com or 157.54.0.1):

< Back Next > Cancel

New Connection Wizard

Smart Cards
You can use your smart card with this connection.



You can configure this connection to use your smart card to log you into the remote network. Select whether to use your smart card with this connection.

☐ Use my smart card

☒ Do not use my smart card

< Back Next > Cancel

New Connection Wizard

Connection Availability
You can make the new connection available to any user or only to yourself.

A connection that is created for your use only is saved in your user account and is not available unless you are logged on.

Create this connection for:

☒ Anyone's use

☐ My use only

< Back Next > Cancel

New Connection Wizard



Completing the New Connection Wizard

You have successfully completed the steps needed to create the following connection:

Xbox VPN

- Share with all users of this computer

The connection will be saved in the Network Connections folder.








☐ Add a shortcut to this connection to my desktop

To create the connection and close this wizard, click Finish.

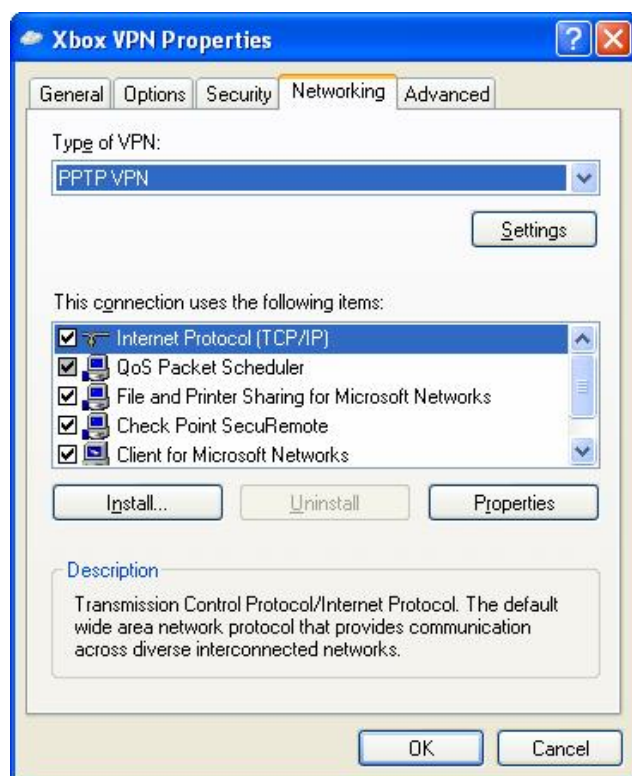
< Back Finish Cancel

2. Configure the VPN connection

Right Click your VPN connection and select Properties

LAN or High-Speed Internet				
 Wireless Network Connection 2	LAN or High-Speed Inter...	Not connected	Intel(R) PRO/Wireless 39...	
 Local Area Connection 3	LAN or High-Speed Inter...	Network cable unplugged	Broadcom NetXtreme Gig...	
 Local Area Connection 4	LAN or High-Speed Inter...	Network cable unplugged	Bluetooth Personal Area ...	
 1394 Connection 3	LAN or High-Speed Inter...	Connected	1394 Net Adapter #3	
Virtual Private Network				
 FgrDun	Virtual Private Network	Disconnected	WAN Miniport (L2TP)	5555555
 Xbox VPN	Virtual Private Network	Disconnected	WAN Miniport (PPTP)	s7.securenetics.com
Wizard				
 New Connection Wizard	Wizard			

Go to the Networking tab and select PPTP VPN as the Type



Go to Advanced and enable ICS
Make sure Local Area Connection ? is your local network card.



3. Connect your xbox to your pc/laptop, Set your xbox network settings to automatic
4. Connect the VPN connection
5. Test your location
<http://whatismyipaddress.com/> (Should show your "new" IP)
6. Connect to Xbox Live and Test.

I was inspired by my favourite forum of all time

www.xbox-360.co.za/forum

Watch out for new developments and changes on there.